

ENDURA

LED Corrosion-Resistant Luminaire

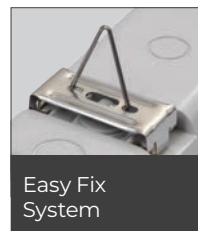
- // High-output opal polycarbonate diffuser
- // High efficiency LED driver and strip
- // European branded components
- // Maintenance free, no need to relamp
- // Presence detection options
- // Supplied with easy fix system for surface or suspended installation
- // Emergency and dimmable versions available
- // IP65
- // 3000K available
- // CRI>80
- // 5-year warranty



Construction

Our Endura IP65 LED corrosion resistant luminaire has been designed as an all-round weatherproof luminaire ideally suited to industrial applications. The luminaire base and opal diffuser are manufactured using high-grade impact resistant polycarbonate material. We have designed our luminaire with an easy fix system which enables the luminaire to be either directly surface mounted using the stainless steel brackets or suspended using the hook set provided, this system ensures the IP65 rating of the luminaire is maintained at all times. Stainless steel clips are supplied as standard.

As standard, the luminaire utilises branded electronic control gear mounted on white powder-coated metal gear tray.



Easy Fix System



Stainless Steel Clips



Integral Sensor Option

Product Code	LED Wattage	Lumen Output	Lumen/Watt	Colour Temperature	Size
EDR14/25LDS	24W	3097	125	4000K	A
EDR15/31LDS	31W	3871	125	4000K	B
EDR24/46LDS	34W	4338	126	4000K	C
EDR25/57LDS	43W	5419	125	4000K	D

Typical Applications

Carparks, Warehouses, Cold Stores, Food Processing Plants, Jet Wash Zones, Laboratories, Plant Rooms, External Canopies and Animal Housing Areas.

Size Options



Size A	Size B	Sizes C	Sizes D
L 1260mm	L 1562mm	L 1260mm	L 1562mm
W 98mm	W 98mm	W 129mm	W 129mm
H 110mm	H 110mm	H 110mm	H 110mm

For optional features, please include the option code suffix with the product code when ordering.