

# MOUNT LIGHTING'S **GUIDE FOR CIBSE RECOMMENDED LIGHTING LEVELS**

This is our helpful guide to the CIBSE recommended lighting levels for the most common premises types. Remember, this is a guide, so any specific building requirements must be carefully considered. If in doubt, consult an expert! Mount Lighting can provide advice on the correct lighting solution for many applications, drawing on our decades of experience in the interior lighting sector.



## Who is CIBSE?

CIBSE is an international engineering association based in London. Their objective is to support the science, art and practice of building service engineering. They provide first-class information, educational services and promote the spirit of fellowship that guides our work.

DISCOVER THE **CIBSE**  
LIGHTING LEVEL TABLES



For more information call 01727 836 695 or email [sales@mountlighting.co.uk](mailto:sales@mountlighting.co.uk)

# FULL CIBSE LIGHTING LEVELS

## Offices

Area	Recommended lighting level	Area	Recommended lighting level
General	500 Lux	Drawing Office	500 Lux
Computer Work Stations	300 – 500 Lux	Drawing Boards	750 Lux
Filing Rooms	300 Lux	CAD Design Areas	300 – 500 Lux
Print Rooms	300 Lux		

### Recommended products

M-Line Suspended & Surface System > M-Line Recessed Trimless System > LEP32LG > Canta >  
Sonic > Halo >

## Retailing

Area	Recommended lighting level	Area	Recommended lighting level
Small Retail Outlets	500 Lux	DIY Superstore	1000 Lux
Supermarkets	750 Lux	Garden Centres	500 Lux
Print Rooms	1000 Lux	Showrooms	500 – 750 Lux

### Recommended products

Lumaled > MEA > M-Line Suspended & Surface System > Blaze > Echo > Volt >

## Engineering

Area	Recommended lighting level	Area	Recommended lighting level
Tool Shops	300 – 750 Lux	Heavy Machine Assembly	300 Lux
Arc Welding	300 Lux	Inspection & Testing	500 – 2000 Lux
Spot Welding	500 – 1000 Lux		

### Recommended products

LMP > Holt Die-Cast > Volt > Eco-Line > Cohort > Flowled I >

## Staff Areas

Area	Recommended lighting level	Area	Recommended lighting level
Changing Rooms & Toilets	100 Lux	Restaurants & Canteens	200 Lux
Restrooms	150 Lux		

### Recommended products

Canta > M-Line Bespoke Shape & Custom Lengths > Helix > Force > Epic > Corona >



# FULL CIBSE LIGHTING LEVELS

## Banks & Building Societies

Area	Recommended lighting level	Area	Recommended lighting level
Counter Offices	500 Lux	Public Areas	300 Lux

### Recommended products

LEP32LG > M-Line Recessed Trimless System > Velo > Flare > Cantata > Quantum >

## Kitchens & Canteens

Area	Recommended lighting level	Area	Recommended lighting level
Serving & Washing Up Areas	300 Lux	Food Stores	300 Lux
Food Preparation & Cooking	300 Lux		

### Recommended products

Orion > Epic > Eco-Line > Endura > LEP32LG > Force >

## General Areas

Area	Recommended lighting level	Area	Recommended lighting level
Entrance Halls & Lobbies	200 Lux	Gatehouses	200 Lux
Enquiry Desks	500 Lux	Post Rooms	500 Lux

### Recommended products

M-Line Bespoke Shape & Custom Lengths > Corona Recessed > Halo > Opalite > Epic >  
M-Line Wall Mounted System >

## Places of Public Accessibility

Area	Recommended lighting level
Churches & Village Halls	300 Lux

### Recommended products

Lumaled > Orbit > Halo > M-Line Suspended & Surface System > Corona > Circ >



# FULL CIBSE LIGHTING LEVELS

## Common Areas

Area	Recommended lighting level	Area	Recommended lighting level
Lifts	100 Lux	Atria	50 – 200 Lux
Corridors & Stairs	100 Lux	Atria with Plants	500 – 3000 Lux
Escalators/Conveyors	150 Lux	Entrances/Exits	200 Lux

### Recommended products

[Lumaled](#) > [Orbit](#) > [Halo](#) > [Circ](#) > [M-Line Wall Mounted System](#) >

[M-Line Suspended & Surface System](#) >

## Building Services Areas

Area	Recommended lighting level	Area	Recommended lighting level
Boiler House	100 Lux	Mechanical Plant Rooms	150 Lux
Control Rooms	300 Lux	Electrical Plant Rooms	100 Lux

### Recommended products

[Cohort Die-Cast](#) > [Cohort](#) > [Endura](#) > [Eco-Line](#) > [Holt Die-Cast](#) > [Holt](#) >

## Distribution & Storage

Area	Recommended lighting level	Area	Recommended lighting level
Loading Bays	150 Lux	Trade Counter	500 Lux
Unpacking & Sorting	200 Lux	Warehouse/Bulk Stores	100 Lux
Large Item Stores	100 Lux	Packing & Dispatch	300 Lux
Small Item Stores	200 Lux	Cold Stores	300 Lux

### Recommended products

[LEP32LG/12X3](#) > [MEA](#) > [Volt](#) > [Opalite](#) > [Eco-Line](#) > [Flowled I](#) >

## Lighting Levels for Hospitals

### Note

Lighting levels for Hospitals and Health Care Centres are specialised and complex, seek guidance from the CIBSE guide for interior lighting. These levels are based on the CIBSE guide for interior lighting and cover only the most common applications.

### Recommended products

[M-Line Suspended & Surface System](#) > [Eco-Line](#) > [Velo](#) > [LEP32LG](#) > [Sonic](#) > [Orbit](#) >

DISCOVER OUR HIGHEST  
RECOMMENDED PRODUCTS



# MOUNT LIGHTING'S RECOMMENDED LIGHTING PRODUCTS

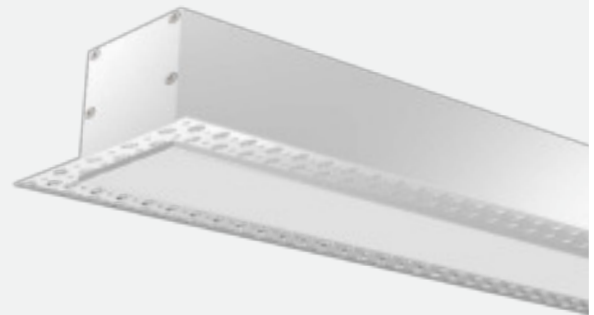
We start your project by assessing your requirements based on site drawings and images. We can review current installations and give a full calculation of energy and cost-saving potential by replacing existing lighting with modern, energy-efficient luminaires. We provide a full lighting design service that utilises our range of products and our team of experts for many refurbishment and new build projects, making the process easy and seamless for you.

Offices

## M-Line Linear LED Range

- Bespoke Shapes & Continuous Lengths
- Colour options in 3000/4000/5000K
- Suspended, Surface, Recessed, Recessed Trimless and Wall Mounting options
- Dimmable, Emergency and Smart wireless control options

 [View online](#)

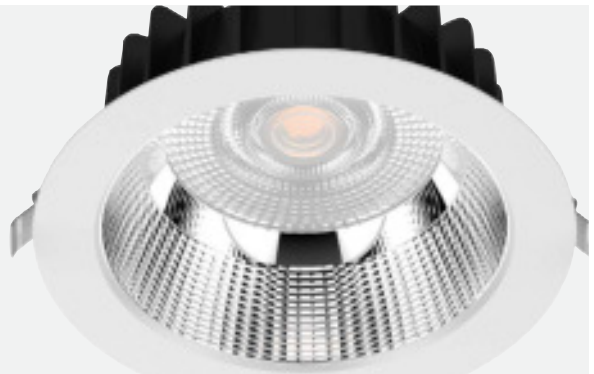


General Areas

## Velo LED DOWNLIGHT

- Available in 18w, 25w or 35w
- 60 Degree beam angle
- Up to 3600 Lumen output
- UGR<19

 [View online](#)



Common Areas

## Halo

- Available in 5 sizes and 16 colours
- Up to 83 Lumen per circuit watt
- Colour matched ceiling rose
- Direct/Indirect option available - 90:10 ratio
- Dimmable, Emergency and Smart wireless control options

 [View online](#)

