

Revit User Guide for



LIGHTING THE WAY

## Suspended & Surface System

Version 2.0 | Revit 2015

March 2017

Created by



# MountLighting\_GnrlPrpseLmnrs\_MLine\_Suspended&SurfaceSystem\_Surface\_Standard

## File Features

- Multiple Finishes (please see manufacture brochure)
- Multiple Types in File (see below)



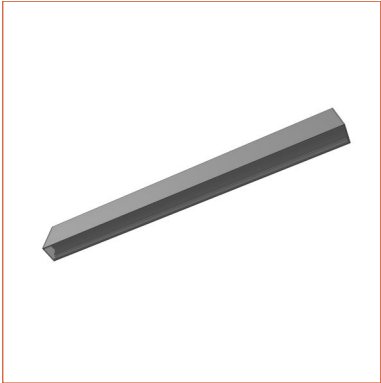
## Predefined Types

| Family Type  | Width | Depth | Height |
|--------------|-------|-------|--------|
| 584mm Width  | 600   | 50    | 90     |
| 864mm Width  | 864   | 50    | 90     |
| 1144mm Width | 1144  | 50    | 90     |
| 1424mm Width | 1424  | 50    | 90     |
| 1704mm Width | 1704  | 50    | 90     |
| 1984mm Width | 1984  | 50    | 90     |
| 2264mm Width | 2264  | 50    | 90     |
| 2544mm Width | 2544  | 50    | 90     |
| 2824mm Width | 2824  | 50    | 90     |

# MountLighting\_GnrlPrpseLmnrs\_MLine\_Suspended&SurfaceSystem\_Surface\_Bespoke

## File Features

- Multiple Finishes (please see manufacture brochure)
- Nominal Width to be altered to create desired length



## Predefined Types

| Family Type | Width   | Depth | Height |
|-------------|---------|-------|--------|
| Bespoke     | Bespoke | 50    | 90     |

# MountLighting\_GnrlPrpseLmnrs\_MLine\_Suspended&SurfaceSystem\_ SuspendedDirect\_Standard

## File Features

- Multiple Finishes (please see manufacture brochure)
- Multiple Types in File (see below)
- Variable Drop Length



## Predefined Types

| Family Type  | Width | Depth | Height |
|--------------|-------|-------|--------|
| 584mm Width  | 600   | 50    | 90     |
| 864mm Width  | 864   | 50    | 90     |
| 1144mm Width | 1144  | 50    | 90     |
| 1424mm Width | 1424  | 50    | 90     |
| 1704mm Width | 1704  | 50    | 90     |
| 1984mm Width | 1984  | 50    | 90     |
| 2264mm Width | 2264  | 50    | 90     |
| 2544mm Width | 2544  | 50    | 90     |
| 2824mm Width | 2824  | 50    | 90     |

# MountLighting\_GnrlPrpseLmnrs\_MLine\_Suspended&SurfaceSystem\_ SuspendedDirect\_Bespoke

## File Features

- Multiple Finishes (please see manufacture brochure)
- Nominal Width to be altered to create desired length
- Variable Drop Length



## Predefined Types

| Family Type | Width   | Depth | Height |
|-------------|---------|-------|--------|
| Bespoke     | Bespoke | 50    | 90     |

# MountLighting\_GnrlPrpseLmnrs\_MLine\_Suspended&SurfaceSystem\_ SuspendedDirect&Indirect\_Standard

## File Features

- Multiple Finishes (please see manufacture brochure)
- Multiple Types in File (see below)
- Variable Drop Length



## Predefined Types

| Family Type  | Width | Depth | Height |
|--------------|-------|-------|--------|
| 584mm Width  | 600   | 50    | 90     |
| 864mm Width  | 864   | 50    | 90     |
| 1144mm Width | 1144  | 50    | 90     |
| 1424mm Width | 1424  | 50    | 90     |
| 1704mm Width | 1704  | 50    | 90     |
| 1984mm Width | 1984  | 50    | 90     |
| 2264mm Width | 2264  | 50    | 90     |
| 2544mm Width | 2544  | 50    | 90     |
| 2824mm Width | 2824  | 50    | 90     |

# MountLighting\_GnrlPrpseLmnrs\_MLine\_Suspended&SurfaceSystem\_ SuspendedDirect&Indirect\_Bespoke

## File Features

- Multiple Finishes (please see manufacture brochure)
- Nominal Width to be altered to create desired length
- Variable Drop Length



## Predefined Types

| Family Type | Width   | Depth | Height |
|-------------|---------|-------|--------|
| Bespoke     | Bespoke | 50    | 90     |

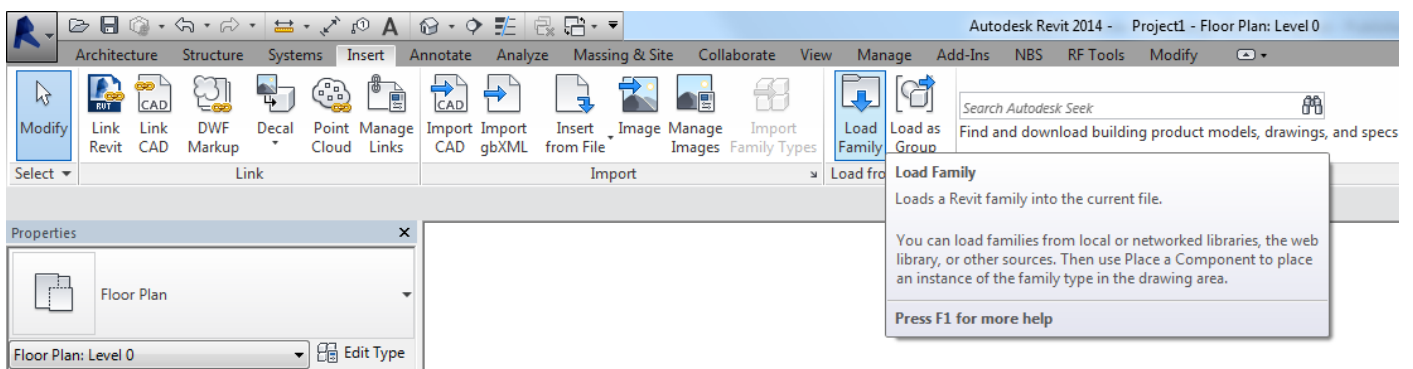
A simple guide to using your Revit Ready file.

---

# 1. LOAD IT

The range can consist of one or more Revit families, these contain predefined types as outlined above in the predefined types and the manufactures brochure.

After downloading and saving the file to a suitable location go to 'Insert Tab/Load Family...'

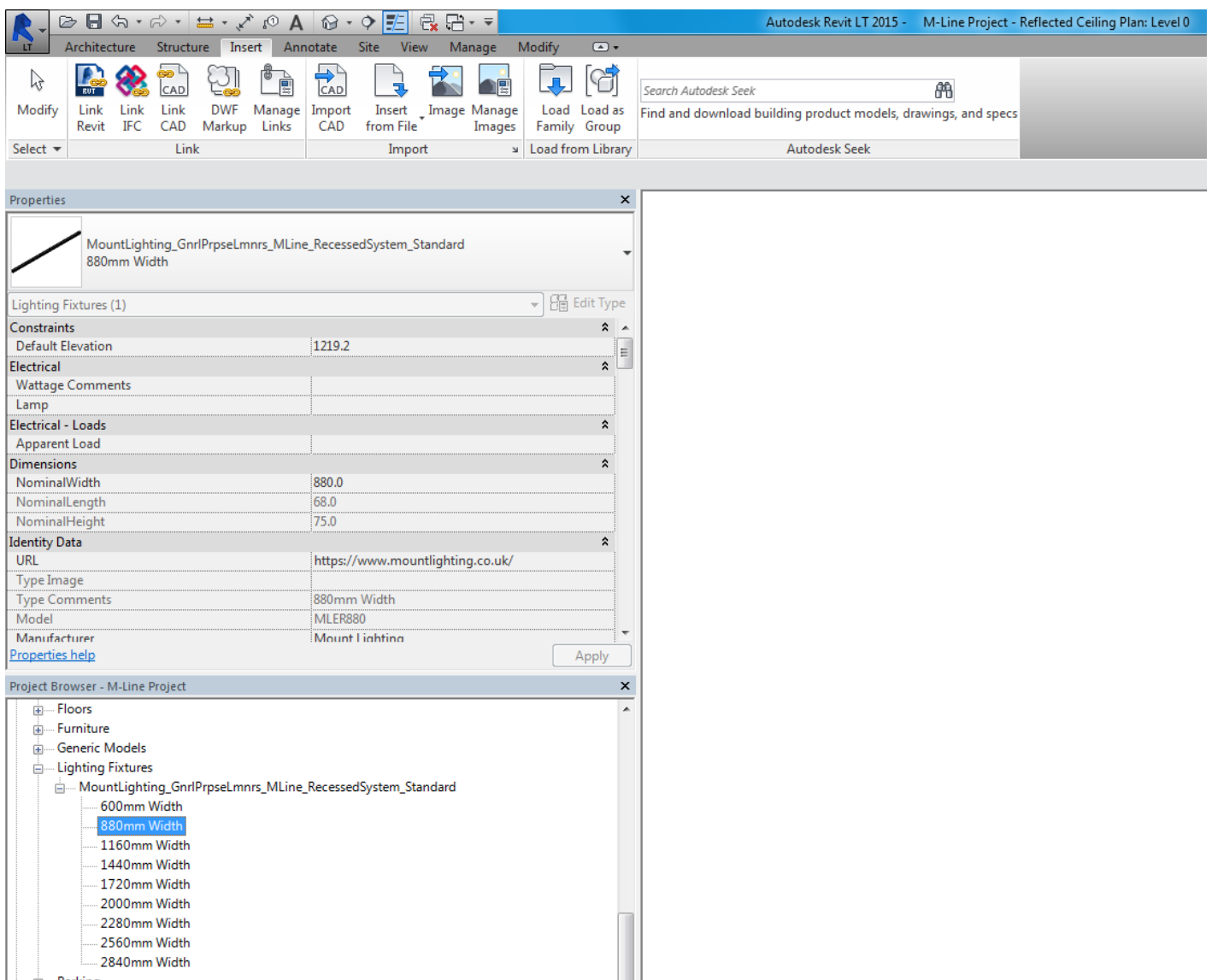




A simple guide to using your Revit Ready file.

## 2. USE IT

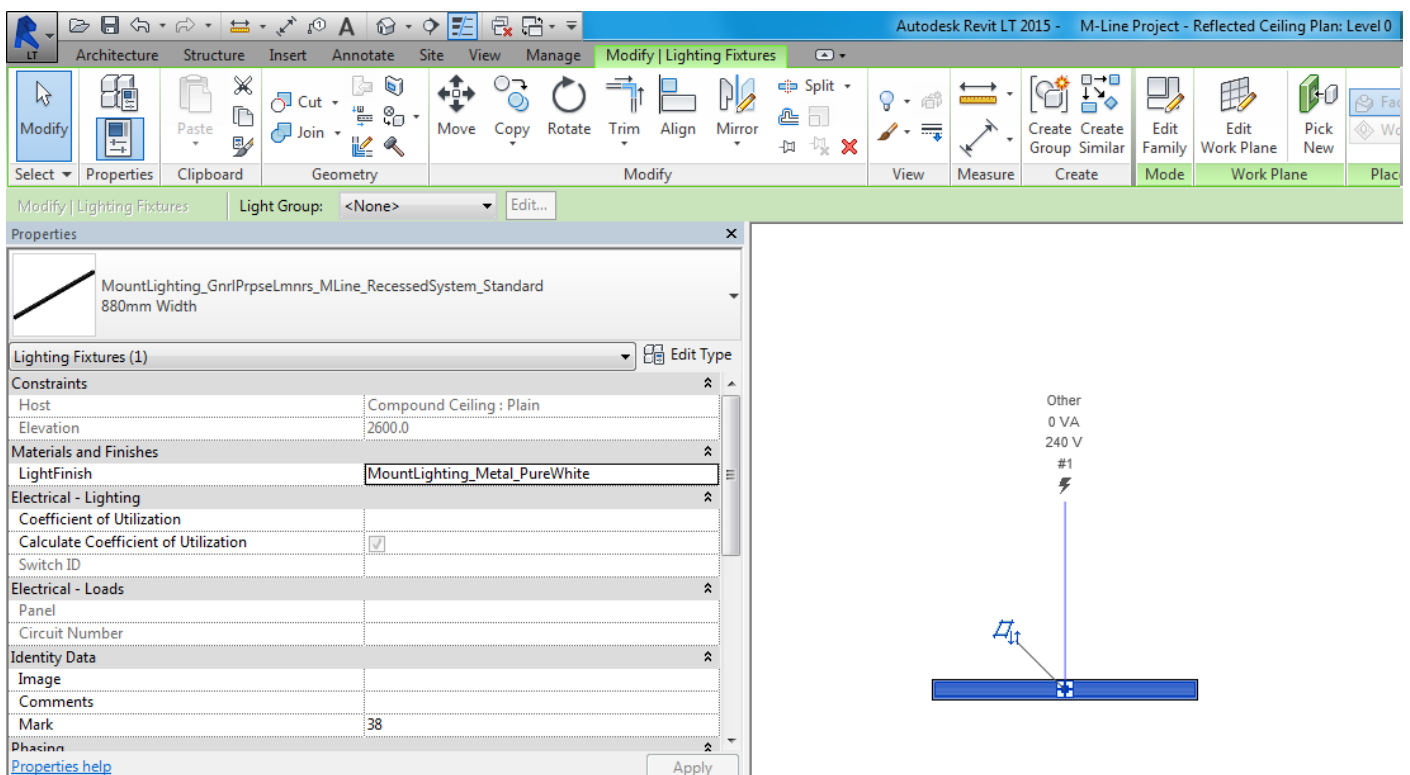
Once your family is loaded in, it will be located in the 'Project Browser/Families/Lighting Fixtures' tab. Types are named in a way to ensure ease of selection. Click and drag your chosen item onto your ceiling please note this lighting fixture can only be added to ceilings.



A simple guide to using your Revit Ready file.

## 3. CUSTOMISE IT

Once an item is selected it will turn blue, the properties panel will then display the parameters available. Here you will be able to make changes to the finishes. All material options will load in with the family, click the 'materials and finishes' parameter to view.



#### Additional information

---

This component has been created by Diane Butterworth Ltd following the manufacturer's specification.

We hope our Revit files are a helpful tool in space planning and visualisation. We take care in ensuring all dimensions and features match manufacturer's literature, however actual product may vary slightly.

We would love to hear from you if you have any questions or feedback, please email [hello@dianebutterworh.com](mailto:hello@dianebutterworh.com)

Thank you for using this BIM file,

