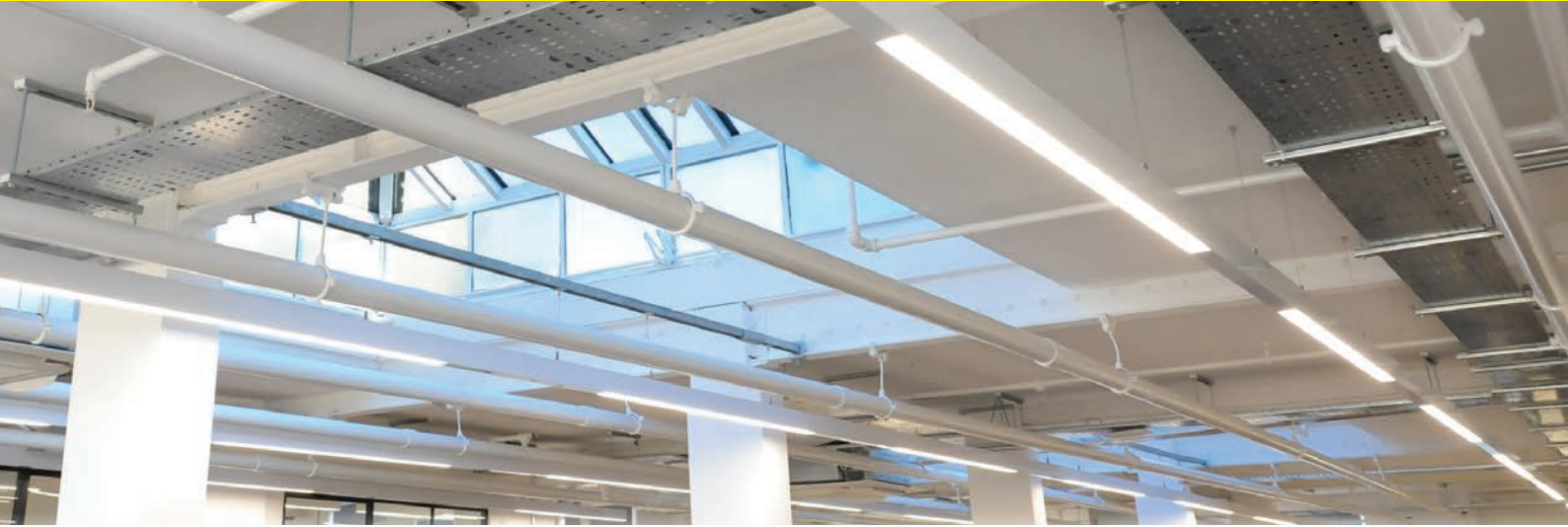


## M-LINE CONTINUOUS SYSTEM



### Construction

M-Line's sleek aluminium profile can be adapted to form many bespoke linear lengths. Corner sections are fully lit to enhance the visual impact that continuous lighting creates. Suspended and wall-mounted systems can be supplied to incorporate direct/indirect lighting options with dual switching available.

The system can also be surface mounted or recessed in both ceilings and walls.

### Typical Applications

General Office Areas, Conference Rooms, Reception Areas, Educational Facilities, Hotels and Leisure Facilities, Residential Properties, Retail, Bars and Restaurants.

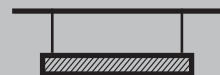
- // Aluminium extruded sections in 9 standard lengths and can be increased by 140mm increments
- // Bespoke-shaped formations subject to design
- // Aluminium blanking plates available
- // Colour options in 3000/4000/5000K
- // Incorporates European branded LED drivers
- // Direct/Indirect lighting options available for suspended and wall mounted
- // Utilises latest generation long-life LEDs from leading manufacturers
- // Clip-in gear tray for easy installation
- // Opal polycarbonate diffuser
- // Tuneable white and RGB options available
- // Dimmable and emergency options available
- // Compatible with Casambi wireless control system
- // Dual switch option available



SURFACE



SUSPENDED



RECESSED



WALL - SURFACE  
OR RECESSED



## M-LINE CONTINUOUS SYSTEM



### Presence Detector

Presence detectors are typically flush mounted in a 50mm wide aluminium plate.



### Light Spill Plate

The innovative light spill plate has been designed to clip in where sections join to hide any unsightly light bleed.



### Joining System

Dual joining plates are mounted within the profile, that slide into grooves in either section to ensure a rigid fit.



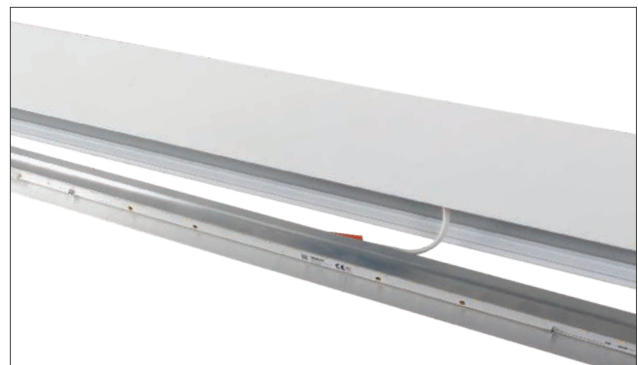
### Suspension Set

Snap-on suspension clip allows easy location at any point along back of luminaire. Alternative lengths available.



### Quick Release Clamps

The quick-release clamp provides a tool-free secure installation method.



### Clip-in Gear Tray

Gear tray is secured using pre-installed clips, which allows for a tool-free installation.

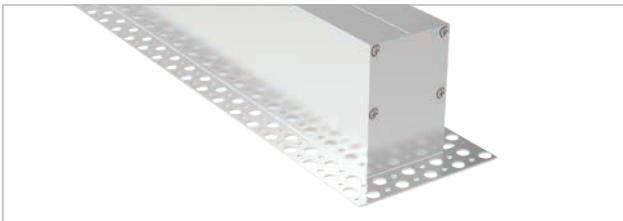
## M-LINE CONTINUOUS SYSTEM



Suspended Direct/Indirect Systems



Surface Mounted Systems



Recessed Trimless System



Recessed System

### Suspension Options

Product Code Suffix	Description
<b>Supply Cable</b>	
CABTR3C	1.5m Transparent Current Cable 3 x0.75mm <sup>2</sup>
CABTR5C	1.5m Transparent Current Cable 5 x0.75mm <sup>2</sup>
CR375W/2M	3 Core 0.75mm White Flex Cable - 2m Lead
CR375B/2M	3 Core 0.75mm Black Flex Cable - 2m Lead
CR475W/2M	4 Core 0.75mm White Flex Cable - 2m Lead
CR475B/2M	4 Core 0.75mm Black Flex Cable - 2m Lead
CR575W/2M	5 Core 0.75mm White Flex Cable - 2m Lead
CR575B/2M	5 Core 0.75mm Black Flex Cable - 2m Lead
MLESUS	2m Suspension Kit for Suspended M-Line

**NOTE:** Alternative length suspension kits available - POA

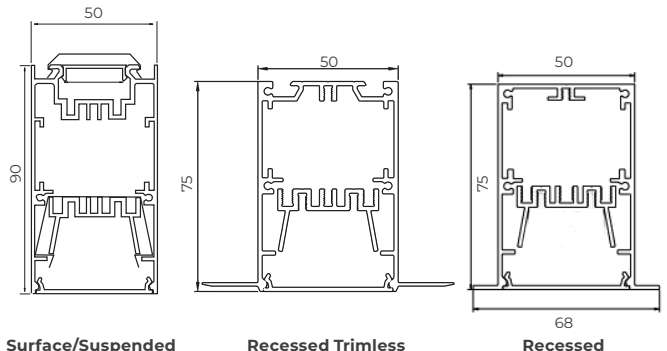
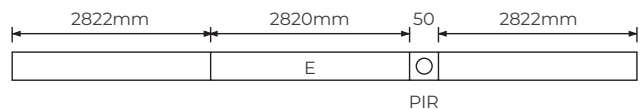
### Control Options

Product Code Suffix	Description
/M	3 Hour Maintained Emergency
/MZ	3 Hour Maintained DALI Emergency
/D	1 - 10v Ballast
/DALI	DALI/DSI Dimmable Ballast
/BTC	Casambi Dimmable
/3K	3000K LED
/5K	5000K LED
/RGB	Colour Changing LED
/TW	Tunable White LED

### Colour Options

Product Code Suffix	Description
W	White (RAL 9016)
G	Grey (RAL 9006)
B	Black (RAL 9005)
U (POA)	Blue (RAL 5002)
V (POA)	Green (RAL 6018)
T (POA)	Yellow (RAL 1021)
K (POA)	Red (RAL 3020)
N (POA)	Jungle
D (POA)	Goldeneye
O (POA)	Sahara
L (POA)	Autumn
R (POA)	Rusty chain
C (POA)	Pure chocolate
1 (POA)	Mist
9 (POA)	Darkrock
1 (POA)	Carbon

### Typical Section Build Up Options



For optional features, please include the option code suffix with the product code when ordering.