

Revit User Guide for



LIGHTING THE WAY

Halo

Version 1.0 | Revit 2016
October 2019

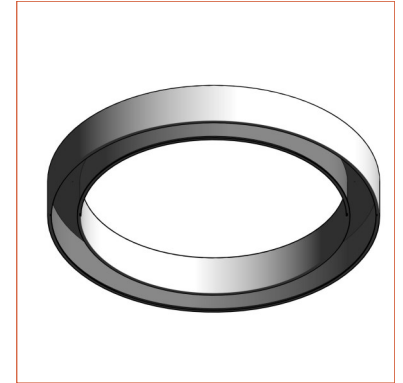
Created by



MountLighting_LghtngSysrms_Halo_Surface

File Features

- Multiple Finishes (please see manufacture brochure)
- Multiple Types in File (see below)



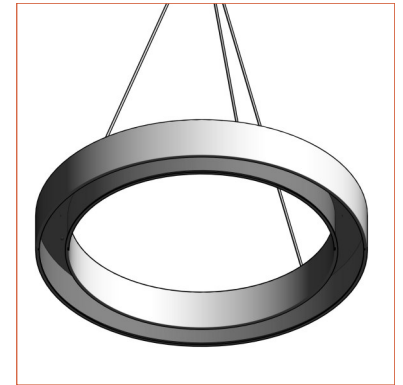
Predefined Types

Family Type	Width	Depth	Height
Ø650x85 mm - DOZ (39W 78lm/W)	650	650	85
Ø650x85 mm - gCONTROL (39W 88lm/W)	650	650	85
Ø650x85 mm - gCONTROL+ (39W 69lm/W)	650	650	85
Ø950x85 mm - DOZ (56W 79lm/W)	950	950	85
Ø950x85 mm - gCONTROL (56W 89lm/W)	950	950	85
Ø950x85 mm - gCONTROL+ (56W 73lm/W)	950	950	85
Ø1250x85 mm - DOZ (73W 80lm/W)	1250	1250	85
Ø1250x85 mm - gCONTROL (73W 90lm/W)	1250	1250	85
Ø1250x85 mm - gCONTROL+ (73W 74lm/W)	1250	1250	85
Ø1550x85 mm - DOZ (89W 78lm/W)	1550	1550	85
Ø1550x85 mm - gCONTROL (89W 86lm/W)	1550	1550	85
Ø1550x85 mm - gCONTROL+ (89W 70lm/W)	1550	1550	85
Ø1950x85 mm - DOZ (112W)	1950	1950	85
Ø1950x85 mm - gCONTROL (112W)	1950	1950	85
Ø1950x85 mm - gCONTROL+ (112W)	1950	1950	85

MountLighting_LghtngSysrms_Halo_Suspended

File Features

- Multiple Finishes (please see manufacture brochure)
- Multiple Types in File (see below)



Predefined Types

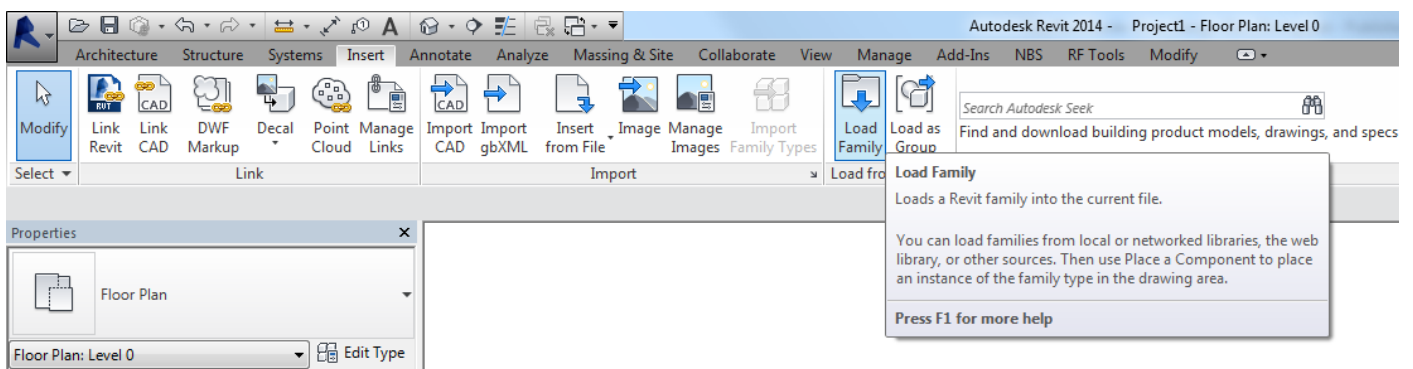
Family Type	Width	Depth	Height
Ø650x85 mm - DOZ (39W 78lm/W)	650	650	85
Ø650x85 mm - gCONTROL (39W 88lm/W)	650	650	85
Ø650x85 mm - gCONTROL+ (39W 69lm/W)	650	650	85
Ø950x85 mm - DOZ (56W 79lm/W)	950	950	85
Ø950x85 mm - gCONTROL (56W 89lm/W)	950	950	85
Ø950x85 mm - gCONTROL+ (56W 73lm/W)	950	950	85
Ø1250x85 mm - DOZ (73W 80lm/W)	1250	1250	85
Ø1250x85 mm - gCONTROL (73W 90lm/W)	1250	1250	85
Ø1250x85 mm - gCONTROL+ (73W 74lm/W)	1250	1250	85
Ø1550x85 mm - DOZ (89W 78lm/W)	1550	1550	85
Ø1550x85 mm - gCONTROL (89W 86lm/W)	1550	1550	85
Ø1550x85 mm - gCONTROL+ (89W 70lm/W)	1550	1550	85
Ø1950x85 mm - DOZ (112W)	1950	1950	85
Ø1950x85 mm - gCONTROL (112W)	1950	1950	85
Ø1950x85 mm - gCONTROL+ (112W)	1950	1950	85

A simple guide to using your Revit Ready file.

1. LOAD IT

The range can consist of one or more Revit families, these contain predefined types as outlined above in the predefined types and the manufactures brochure.

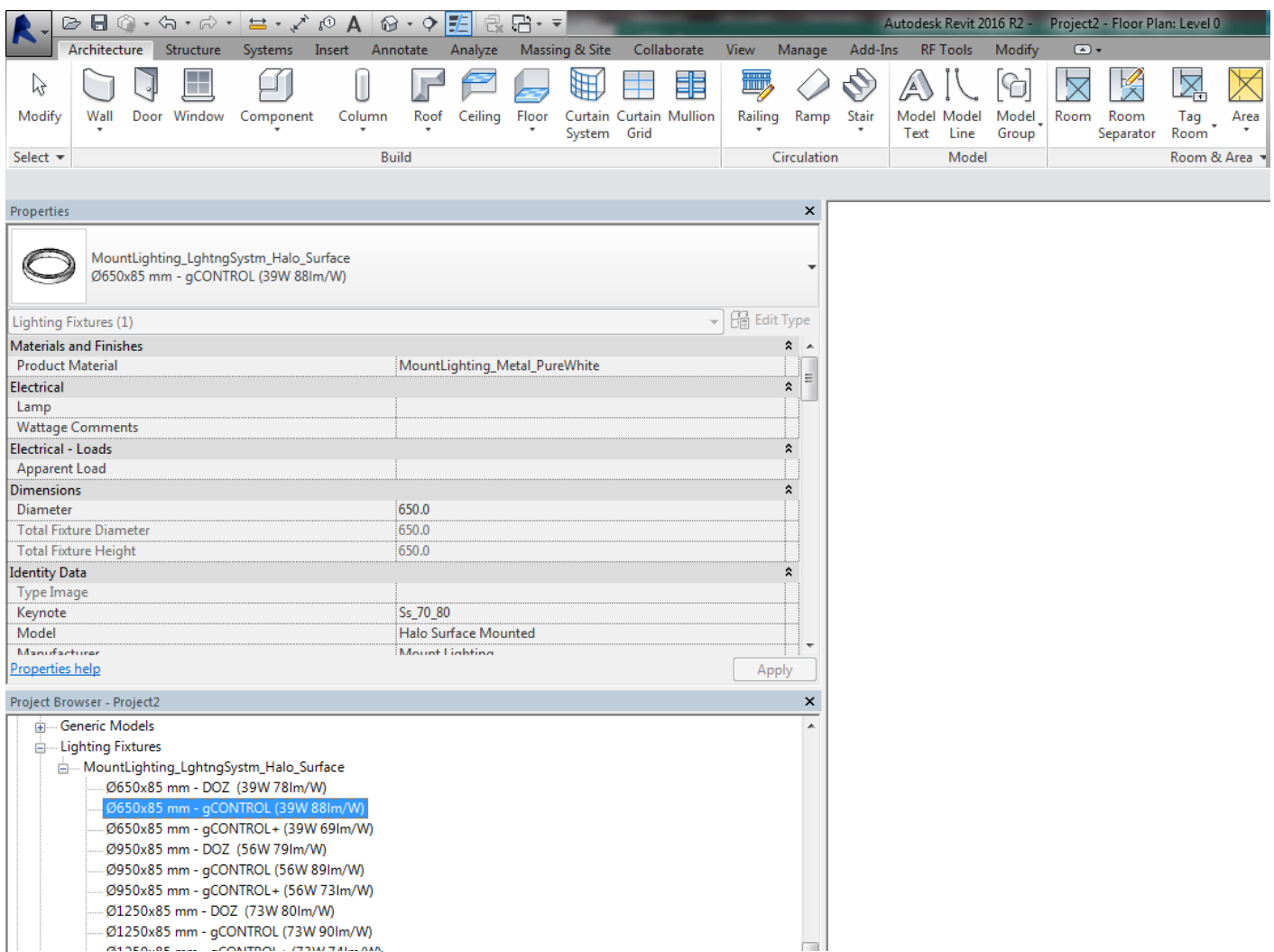
After downloading and saving the file to a suitable location go to 'Insert Tab/Load Family...'



A simple guide to using your Revit Ready file.

2. USE IT

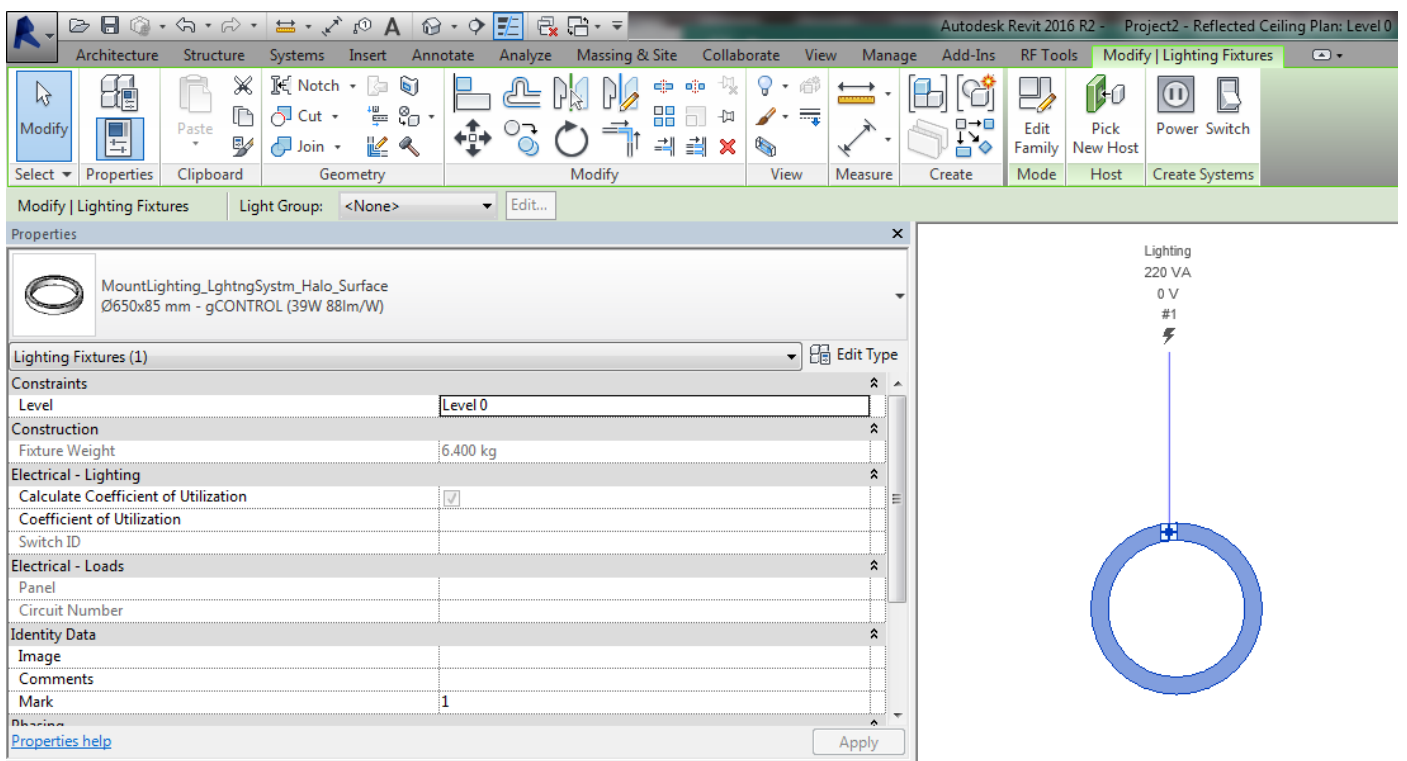
Once your family is loaded in, it will be located in the 'Project Browser/Families/Lighting Fixtures' tab. Types are named in a way to ensure ease of selection. Click and drag your chosen item onto your ceiling please note this lighting fixture can only be added to ceilings.



A simple guide to using your Revit Ready file.

3. CUSTOMISE IT

Once an item is selected it will turn blue, the properties panel will then display the parameters available. Here you will be able to make changes to the finishes. All material options will load in with the family, click the 'materials and finishes' parameter to view.



Additional information

This component has been created by Diane Butterworth Ltd following the manufacturer's specification.

We hope our Revit files are a helpful tool in space planning and visualisation. We take care in ensuring all dimensions and features match manufacturer's literature, however actual product may vary slightly.

We would love to hear from you if you have any questions or feedback, please email hello@dianebutterworth.com

Thank you for using this BIM file

