

HUSH



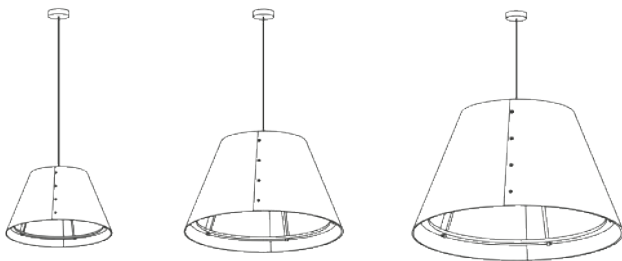
Construction

Our Hush acoustic light shade has been designed to absorb noise in even the smallest of places and is suitable for multiple applications within the office. It can be installed directly into plasterboard or suspended ceilings. The acoustic shade is made from 50% recycled PET felt and is available in a choice of three tones of grey. The popper fasteners contain 0% formaldehyde and are available in four colour options.

Typical Applications

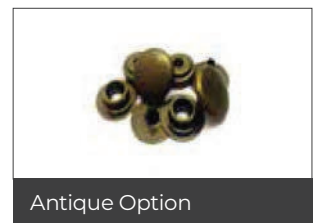
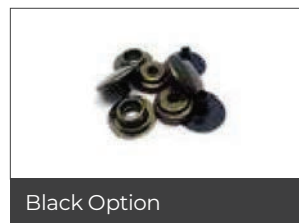
Open Plan Office Areas, Breakout Spaces, Conference Rooms, Reception Areas, Retail and Hospitality.

Size Options



HUS500	HUS750	HUS1000
Ø 500mm	Ø 750mm	Ø 1000mm

- // Designed and manufactured in the UK
- // 5mm PET acoustic felt
- // Made from 50% recycled PET
- // No formaldehyde binders
- // Low VOC's
- // Choice of feature popper finish
- // REACH approved
- // Complete with ceiling rose and flex
- // 5-year warranty
- // Manufactured in the UK



Product Code	Voltage	Lamp
HUS500	240V	E27 Standard and Dimmable
HUS750	240V	E27 Standard and Dimmable
HUS1000	240V	E27 Standard and Dimmable

Option Code	Description
/LGR	Light Grey
/MGR	Mid Grey
/DGR	Dark Grey
/BR	Brass Poppers
/CHR	Chrome Poppers
/BLK	Black Poppers
/ATQ	Antique Gold Poppers

For optional features, please include the option code suffix with the product code when ordering.