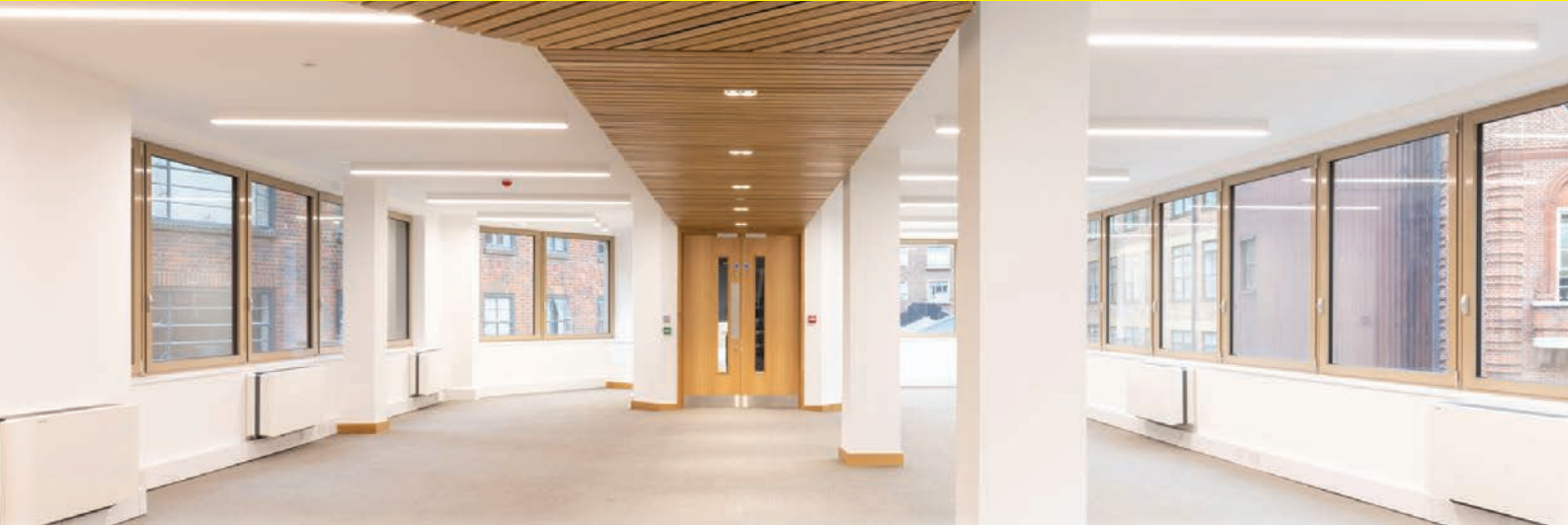


M-LINE 38 SURFACE AND SUSPENDED



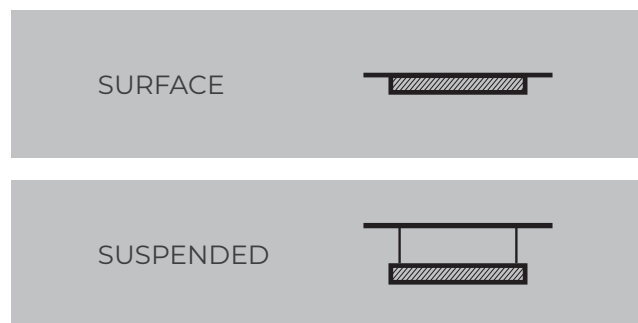
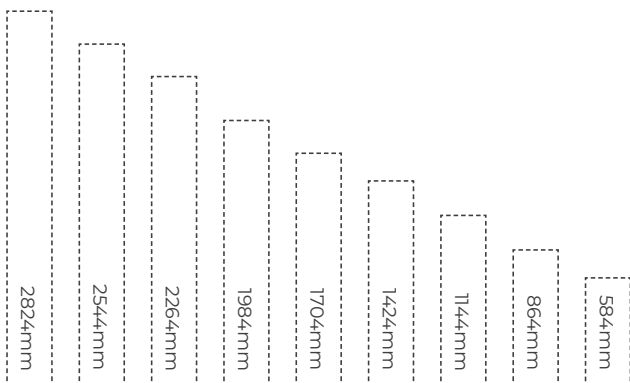
Construction

The suspended and surface system utilises the same profile and is available in standard lengths up to 2824mm with bespoke lengths available to order. Surface mounting is achieved by directly fixing through the rear of the profile. Suspension is made simple using a single point ceiling bracket with 2m adjustable stainless steel wire system. Uplighting is available on lengths from 584mm upwards.

Typical Applications

General Office Areas, Conference Rooms, Reception Areas, Educational Facilities, Retail Units, Bars, Restaurants, Hotels and Leisure Facilities and Residential Properties.

- // Aluminium extruded sections in 9 standard lengths
- // Bespoke lengths available in 140mm increments
- // Colour options in 3000K/4000K/5000K
- // Custom shapes available subject to design
- // Incorporates European branded LED drivers
- // Up to 104 lumens per circuit watt
- // Utilises latest generation long-life LEDs from leading manufacturers
- // Clip-in gear tray for easy installation
- // Opal polycarbonate diffuser
- // Tuneable white and RGB options available
- // Dimmable and emergency options available
- // Compatible with Casambi wireless control system
- // Dual Switch option available



M-LINE 38 SURFACE AND SUSPENDED



Suspended Direct Lighting System					
Product Code	LED Wattage	Lumen Output	Lumen/Watt	Colour Temperature	Size
MLE38/584	17W	1589	104	4000K	584mm x 38mm
MLE38/864	26W	2383	104	4000K	864mm x 38mm
MLE38/1144	35W	3178	104	4000K	1144mm x 38mm
MLE38/1424	43W	3972	104	4000K	1424mm x 38mm
MLE38/1704	52W	4767	104	4000K	1704mm x 38mm
MLE38/1984	60W	5562	104	4000K	1984mm x 38mm
MLE38/2264	70W	6356	104	4000K	2264mm x 38mm
MLE38/2544	78W	7150	104	4000K	2544mm x 38mm
MLE38/2824	87W	7945	104	4000K	2824mm x 38mm

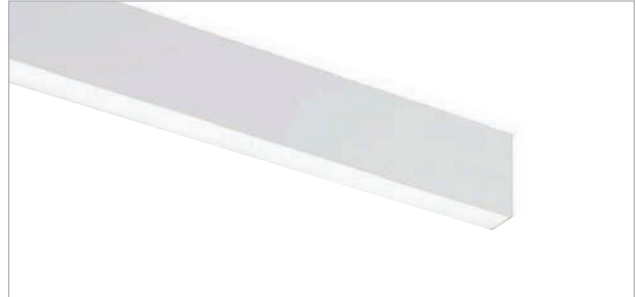
NOTE: Includes 2m suspension kits (longer bespoke lengths available in 140mm increments)

Surface Mounted System					
Product Code	LED Wattage	Lumen Output	Lumen/Watt	Colour Temperature	Size
MLES38/584	22W	1589	104	4000K	584mm x 38mm
MLES38/864	35W	2383	104	4000K	864mm x 38mm
MLES38/1144	48W	3178	104	4000K	1144mm x 38mm
MLES38/1424	61W	3972	104	4000K	1424mm x 38mm
MLES38/1704	74W	4767	104	4000K	1704mm x 38mm
MLES38/1984	88W	5562	104	4000K	1984mm x 38mm
MLES38/2264	101W	6356	104	4000K	2264mm x 38mm
MLES38/2544	114W	7150	104	4000K	2544mm x 38mm
MLES38/2824	127W	7945	104	4000K	2824mm x 38mm

M-LINE 38 SURFACE AND SUSPENDED



Suspended Direct System



Surface Mounted System

Control Options

Option Code	Description
/M	3 Hour Maintained Emergency
/MZ	3 Hour Maintained DALI Emergency
/D	1-10V Driver
/DALI	DALI/DSI Dimmable Driver
/BTC	Casambi Dimmable
/3K	3000K LED
/5K	5000K LED
/RGB	Colour Changing LED
/TW	Tunable White LED

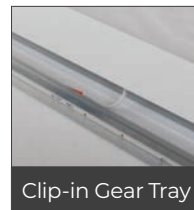
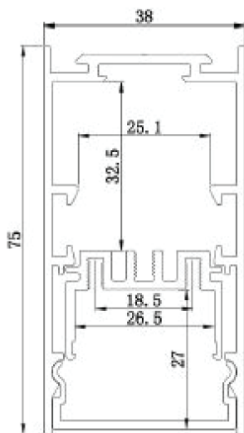
Colour Options

Option Code	Description
/W	White (RAL 9016)
/G	Grey (RAL 9006)
/B	Black (RAL 9005)
/U (POA)	Blue (RAL 5002)
/V (POA)	Green (RAL 6018)
/T (POA)	Yellow (RAL 1021)
/K (POA)	Red (RAL 3020)
/N (POA)	Jungle
/D (POA)	Goldeneye
/O (POA)	Sahara
/L (POA)	Autumn
/R (POA)	Rusty chain
/C (POA)	Pure chocolate
/I (POA)	Mist
/9 (POA)	Darkrock
/I (POA)	Carbon

Suspension Options

Option Code	Description
Supply Cable	
CABTR3C	1.5m Transparent Current Cable 3 x0.75mm ²
CABTR5C	1.5m Transparent Current Cable 5 x0.75mm ²
MLESUS	2m Suspension kit for suspended M-Line

NOTE: Alternative length suspension kits available - POA



For optional features, please include the option code suffix with the product code when ordering.