

LENS-LINE

M-LINE®



Construction

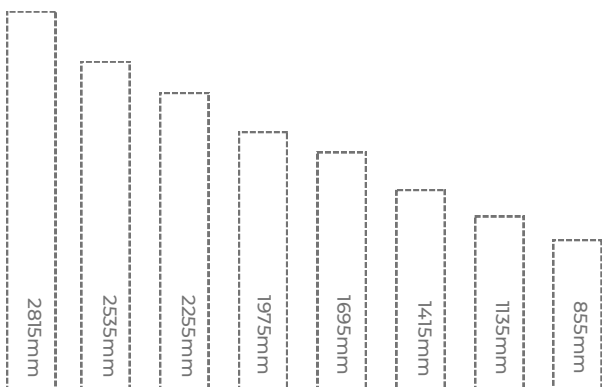
Low glare, UGR19 compliant LED linear fitting that outperforms its rivals in light distribution and efficiency. Manufactured in-house from a 2-part aluminium extrusion, the profile allows for hidden controls and the option of surface mounting or 2m suspension points positioned anywhere along the length of the luminaire. The Lens-Line is also available in 8 different standard lengths or continuous, uninterrupted lengths by adding increments of 280mm and includes options for 75%/25% direct/indirect light distribution.

The Lens-Line is the most sustainable UGR19 linear lighting option with low carbon footprint and high energy efficiency. **We are now sending out our M-Line products pre-flexed to make installation easy for you!**

- // Supports UGR19
- // Super efficiency at 195 lumens per watt
- // Available in 8 standard lengths
- // Surface, suspended and suspended direct/indirect mounting options available
- // 3m Clear Flex
- // Continuous lengths available in increments of 280mm
- // Emergency and DALI options available
- // Compatible with Casambi wireless control system
- // White as standard, black and grey options available
- // 3000K option available
- // IP20
- // CRI>80
- // 5-year warranty

Typical Applications

General Office Areas, Task Spaces, Educational Facilities, Medical and Health Facilities, Conference Rooms and Reception Areas.



MADE IN BRITAIN®

SURFACE



SUSPENDED



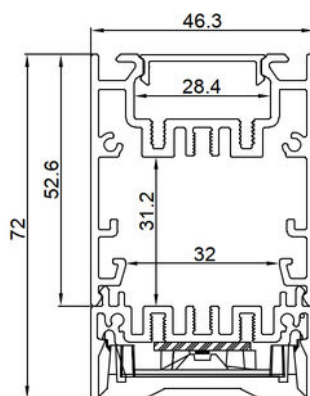
LENS-LINE

M-LINE®



Product Code	LED Wattage	Lumen Output	Lumen/Watt	Colour Temperature	Size
Suspended Direct lighting System					
LLE855	10W	1875	195	4000K	855mm x 46.3mm
LLE1135	13W	2500	195	4000K	1135mm x 46.3mm
LLE1415	16W	3125	195	4000K	1415mm x 46.3mm
LLE1695	19W	3750	195	4000K	1695mm x 46.3mm
LLE1975	22W	4375	195	4000K	1975mm x 46.3mm
LLE2255	26W	5000	195	4000K	2255mm x 46.3mm
LLE2535	29W	5625	195	4000K	2535mm x 46.3mm
LLE2815	32W	6250	195	4000k	2815mm x 46.3mm
To order surface mounted, please use code LLS then size. Lumen output is the same as suspended					
Suspended Direct/Indirect Lighting System/75% Direct/25% Indirect					
LLD1135	20W	3291	165	4000K	1135mm x 46.3mm
LLD1415	25W	4181	165	4000K	1415mm x 46.3mm
LLD1695	31W	5071	165	4000K	1695mm x 46.3mm
LLD1975	36W	5361	165	4000K	1975mm x 46.3mm
LLD2255	41W	6851	165	4000K	2255mm x 46.3mm
LLD2535	47W	7741	165	4000K	2535mm x 46.3mm
LLD2815	52W	8631	165	4000K	2815mm x 46.3mm

Dimensions



*Measurements are displayed in mm

Size

W 46.3mm

H 72mm

Product Configuration

Choose your options to generate the full order code

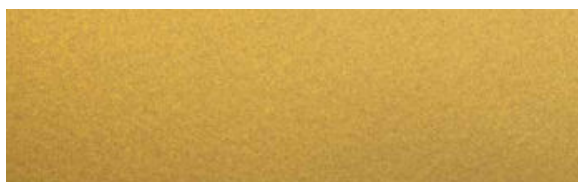
Section	Option Code	Description
1 - EMERGENCY	/M	Leave blank if no emergency
	/MZ	Emergency
	/ND	DALI Emergency
2 - CONTROL	/DA	Non Dim
	/D	DALI Dim
	/BTC	1-10V Dim
3 - FINISH	/9016	Casambi Dim
	/9005	RAL9016 White
	/9006	RAL9005 Black
4 - CCT	/4K	RAL9006 Grey
	/3K	4000K
5 - CRI	/80	3000K
		CRI>80

FULL CODE EXAMPLE:

LLLE1415/MZ/DA/9005/4K/CRI80 = Lens Line Suspended Linear Light, 1415mm, DALI Emergency, DALI Dim, Black RAL9005, 4000K, CRI80

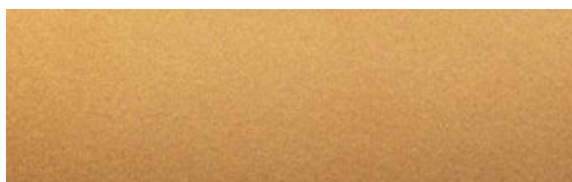
NEW FINISHES!

Powder Coating



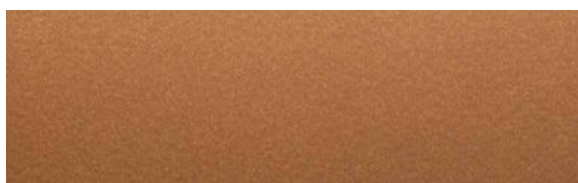
/WB

Warm Brass



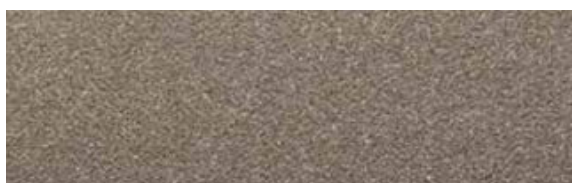
/SC

Sunset Copper



/RC

Red Copper



/CI

Cast Iron



/PB

Pearl Bronze



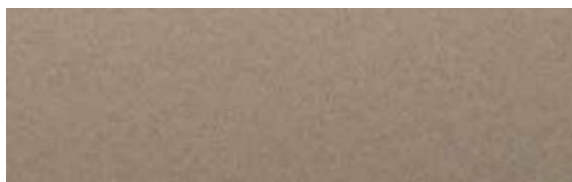
/FT

Fine Titanium



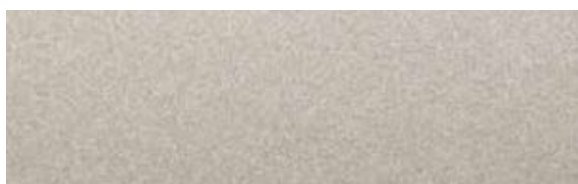
/VC

Vintage Copper



/HN

Hard Nickel



/AC

Authentic Silver



/SUS

Subtle Steel



/EC

Earthy Bronze



/SS

Solid Steel