

## SUSPENDED & SURFACE SYSTEM

## M-LINE®



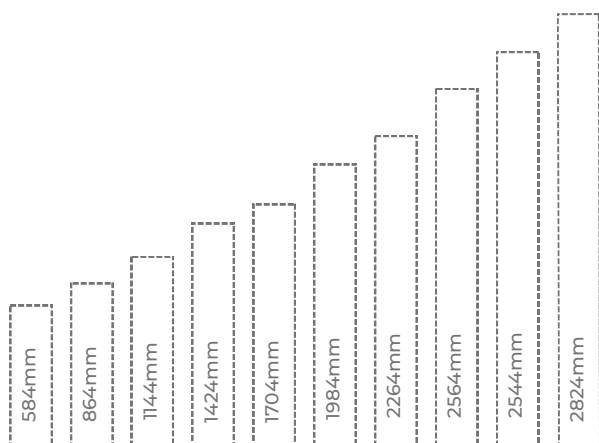
### Construction

The suspended and surface systems utilise the same profile as one another, and are available in standard lengths up to 2824mm, with bespoke lengths available to order. Surface mounting is achieved by directly fixing through the rear of the profile. Suspension is made simple using a single-point ceiling bracket with 2m adjustable stainless steel wire system. Uplighting is available on lengths from 584mm upwards. **We are now sending out our M-Line products pre-flexed, making installation easy for you!**

### Typical Applications

General Office Areas, Conference Rooms, Reception Areas, Educational Facilities, Retail Units, Bars, Restaurants, Hotels and Leisure Facilities.

### Size Options



- // Aluminium extruded sections in 9 standard lengths
- // Bespoke lengths available in 140mm increments
- // 106 lumens per watt
- // Colour options in 3000K/4000K/5000K
- // Custom shapes available subject to design
- // Incorporates European branded LED drivers
- // Direct/Indirect lighting options available for suspended fittings
- // Utilises latest generation long-life LEDs from leading manufacturers
- // Clip-in gear tray for easy installation
- // Screwless end caps available on request
- // Opal polycarbonate diffuser
- // Tuneable white and RGB options available
- // Dimmable and emergency options available
- // Compatible with Casambi wireless control system
- // Dual circuit option available
- // CRI>80 as standard, CRI 90 on request
- // L70B50 lifetime 102,000 hours
- // 5-year warranty



SURFACE



SUSPENDED



## M-LINE SUSPENDED & SURFACE SYSTEM

## M-LINE®



### Suspended Direct Lighting System

Product Code	LED Wattage	Lumen Output	Lumen/Watt	Colour Temp.	Size
MLE584	13W	1376	106	4000K	584 x 50mm
MLE864	19W	2064	109	4000K	864 x 50mm
MLE1144	25W	2756	110	4000K	1144 x 50mm
MLE1424	31W	3440	111	4000K	1424 x 50mm
MLE1704	38W	4129	109	4000K	1704 x 50mm
MLE1984	44W	4846	109	4000K	1984 x 50mm
MLE2264	50W	5504	110	4000K	2264 x 50mm
MLE2544	56W	6191	111	4000K	2544 x 50mm
MLE2824	63w	6879	109	4000K	2824 x 50mm

**NOTE:** Includes 2m suspension kits (longer bespoke lengths available in 140mm increments)

### Surface Mount Lighting System

Product Code	LED Wattage	Lumen Output	Lumen/Watt	Colour Temp.	Size
MLS584	13w	1376	106	4000K	584 x 50mm
MLS864	19W	2064	109	4000K	864 x 50mm
MLS1144	25W	2752	110	4000K	1144 x 50mm
MLS1424	31W	3440	111	4000K	1424 x 50mm
MLS1704	38W	4129	109	4000K	1704 x 50mm
MLS1984	44W	4816	109	4000K	1984 x 50mm
MLS2264	50W	5504	110	4000K	2264 x 50mm
MLS2544	56W	6191	111	4000K	2544 x 50mm
MLS2824	63W	6879	109	4000K	2824 x 50mm

### Suspended Direct/Indirect Lighting System/70% Direct/30% Indirect

Product Code	LED Wattage	Lumen Output	Lumen/Watt	Colour Temp.	Size
MLD584	17W	1895	111	4000K	584 x 50mm
MLD864	26W	2844	109	4000K	864 x 50mm
MLD1144	34W	3784	111	4000K	1144 x 50mm
MLD1424	44W	4816	109	4000K	1424 x 50mm
MLD1704	53W	5849	110	4000K	1704 x 50mm
MLD1984	62W	6879	111	4000K	1984 x 50mm
MLD2264	72W	7912	110	4000K	2264 x 50mm
MLD2544	81W	8943	110	4000K	2544 x 50mm
MLD2824	91W	9976	110	4000K	2824 x 50mm

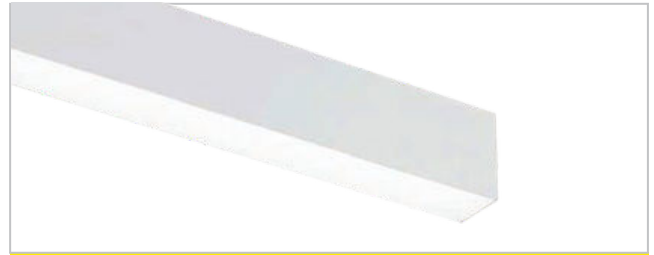
**NOTE:** Includes 2m suspension kits (longer bespoke lengths available in 140mm increments)

## M-LINE SUSPENDED & SURFACE SYSTEM

## M-LINE®



**Suspended Direct/Indirect System**



**Surface Mounted System**

### Product Configuration

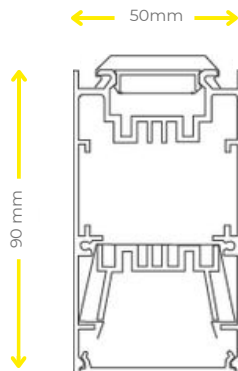
Choose your options to generate the full order code

Section	Option Code	Description
1 - EMERGENCY	/M	Leave blank if no emergency Emergency
	/MZ	DALI Emergency
	/ND	Non Dim
2 - CONTROL	/DA	DALI Dim
	/BTC	Casambi Dim
	/9016	RAL9016 White
3 - FINISH	/9005	RAL9005 Black
	/RA	Any RAL Colour
	/	See next page for new finishes
	/4K	4000K
4 - CCT	/3K	3000K (light output -6%)
	/5K	5000K
	/TW	Tunable White
	/RGB	Colour Changing LED
	5 - CRI	/80
/90		CRI>90

#### FULL CODE EXAMPLE:

MLE1424/MZ/DA/9005/4K/80 = M-Line Suspended Linear Light, 1424mm, DALI Dim, Black RAL9005, 4000K, CRI>80

### Profile Dimensions



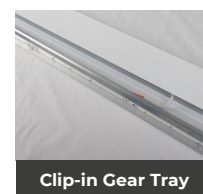
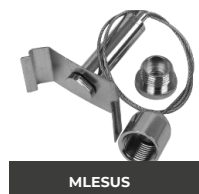
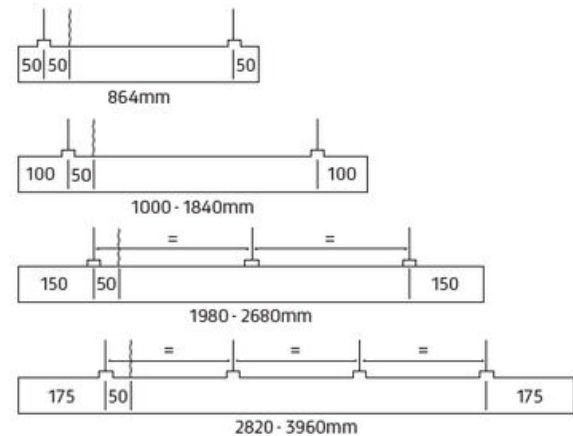
### Suspension Accessories

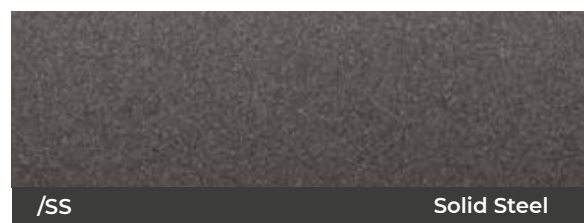
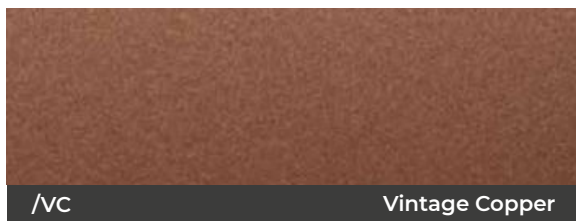
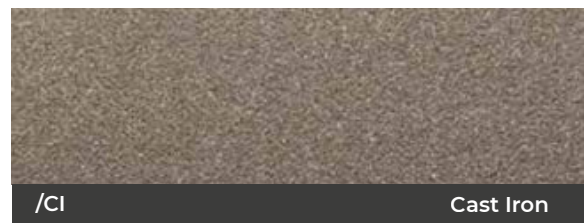
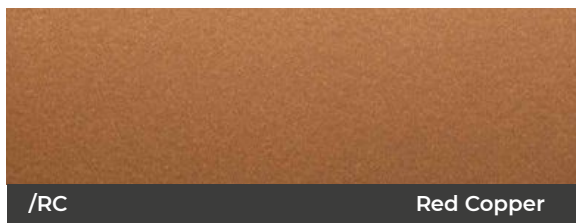
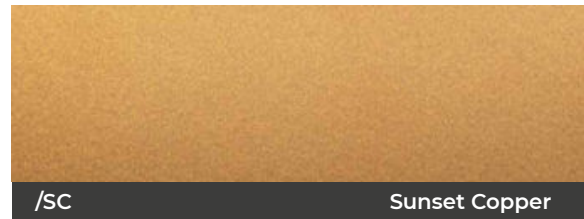
Option Code	Description
<b>Supply Cable</b>	
CR375C/3M	3 core 0.75mm clear flex cable - 3m lead
CR475C/3M	4 core 0.75mm clear flex cable - 3m lead
CR575C/3M	5 core 0.75mm clear flex cable -3m lead
<b>NOTE:</b> Alternative length suspension kits available - POA	

#### LED Technical Parameters

Operating Life - L70/B50 at 50°C	102,000 hrs
LED Binning	SDCM <3

### Suspension and Cable Entry Points

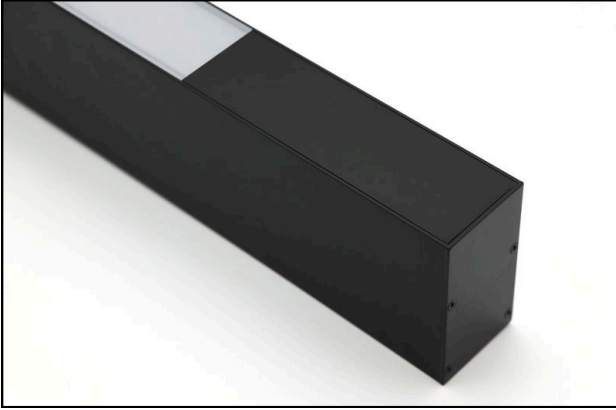


**NEW FINISHES!**  
Powder Coating

## M-LINE SUSPENDED & SURFACE SYSTEM

## M-LINE®

### Available Custom Features



#### Blanking Sections

Blanking sections available through design service



#### Pre-flexed cable (suspended only)

Make installation easier



#### Presence Detection - Blank sections

Presence detectors can be flush mounted into the blanking section



#### Track Spot - Blank sections

Track spots can be mounted in a blank section of the M-Line



#### Quick Release Clamps

The quick-release clamp provides a tool-free secure installation method.



#### Uplight (suspended & wall mounted only)

For illuminating exposed and high ceilings for ambient layers of light.

## M-LINE LOW-GLARE LINEAR

## M-LINE®



### Construction

The new premium low glare MLG suspended and surface system from Mount Lighting utilises the same 50mm profile as standard M-Line, and is available in standard lengths up to 2808mm. Bespoke lengths and shapes are available to order.

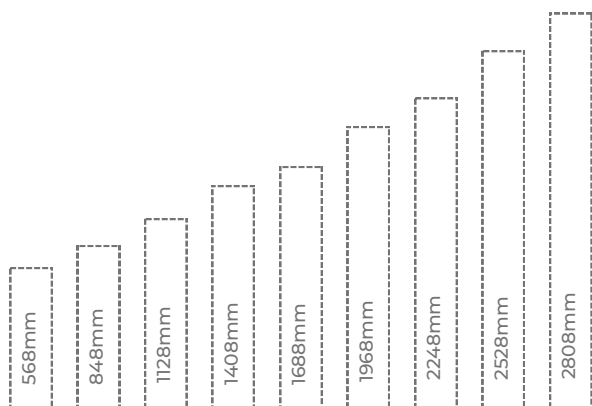
The custom-developed lens offers an opal-like finish for aesthetics, without the glare disadvantages of opal diffusers.

Surface mounting is achieved by directly fixing through the rear of the profile. Suspension is made simple using a single-point ceiling bracket with 2m adjustable stainless steel wire system. Uplighting is available on lengths from 568mm upwards. **We are now sending out our M-Line products pre-flexed, making installation easy for you!**

### Typical Applications

General Office Areas, Conference Rooms, Reception Areas, Educational Facilities, Retail Units, Bars, Restaurants, Hotels and Leisure Facilities

### Size Options



- // Aluminium extruded sections in 10 standard lengths
- // Bespoke lengths available in 47mm/140mm increments
- // Up to 118 lm/watt, 137lm/W for direct/indirect
- // Colour options in 3000K and 4000K
- // Custom lengths and shapes available subject to design
- // Incorporates Tridonic/Helvar LED drivers
- // Direct/Indirect lighting options available for suspended fittings
- // Utilises latest generation long-life LEDs from leading manufacturers
- // Clip-in gear tray for easy installation
- // Low glare dual lens diffuser
- // Tuneable white and RGBW options available
- // Dimmable and emergency options available
- // Compatible with Casambi wireless control system
- // Dual Control option available
- // CRI>80, >100,000h life expectancy
- // 5-year warranty
- // Made in Britain

**MADE IN BRITAIN**®

SURFACE



SUSPENDED

